

MATERIAL LIST FOR ASSEMBLY MainCol1-1 2 No. Required

Mark	Profile	Material	No.	Length	Area	Weight
P-Type1	Box20x20x0/8	St37	1	111/1	14212	44/1
P-Type2	Box18x18x0/6	St37	1	100	14004	32/8
P-Type4	Box20x20x0/8	St37	1	896/8	137588	431/6
P-Type3	Box10x10x0/3	St37	1	65/4	2524	2/9
P-Type5	Box18x18x0/6	St37	1	990/8	137734	324/1
P-Type35	Box14x14x0/4	St37	1	100/1	9891	15/5
P-Type6	Box10x10x0/3	St37	1	79/2	4076	4/8
P-Type7	Box10x10x0/3	St37	1	83/8	4427	5/2
P-Type8	Box10x10x0/3	St37	1	86	4661	5/5
P-Type9	Box10x10x0/3	St37	1	93/3	5166	6
P-Type10	Box10x10x0/3	St37	1	95/7	5419	6/3
P-Type11	Box10x10x0/3	St37	1	103/8	5986	7
P-Type12	Box10x10x0/3	St37	1	106/4	6259	7/3
P-Type13	Box10x10x0/3	St37	1	115/4	6896	8/1
P-Type14	Box10x10x0/3	St37	1	118/4	7192	8/4
P-Type15	Box10x10x0/3	St37	1	128/4	7908	9/3
P-Type16	Box10x10x0/3	St37	1	131/7	8228	9/7
P-Type17	Box10x10x0/3	St37	1	139/8	8837	10/4
P-Type36	Box10x10x0/3	St37	1	60/8	2780	3/2
P-Type34	Box14x14x0/4	St37	1	102	10076	15/7
P-Type37	Box10x10x0/3	St37	1	53/6	2714	3/2
P-Type18	Double Unp12x5/5x0/9   Dist3	St37	1	142/9	9324	27/7
P-Type56	PL 380x380x1/5	St37	1	38	3163	16/4
P-Type85	PL 420x120x1	St37	1	42	1117	3/9
P-Type69	PL 584x340x1/5	St37	1	58/4	4302	22/7
P-Type70	Erratic PL thk = 8	St37	1	2	104	0/2
P-Type71	Erratic PL thk = 8	St37	1	2	73	0/2
P-Type91	PL 200x100x0/8	St37	2	20	447	1/2
P-Type79	PL 140x140x0/6	St37	2	14	426	0/9
P-Type64	PL 577x340x1/5	St37	1	57/7	4249	22/4
P-Type65	Erratic PL thk = 8	St37	1	2	32	0/1
P-Type66	Erratic PL thk = 8	St37	1	2	131	0/3
P-Type53	PL 150x150x0/8	St37	4	15	497	1/4
P-Type54	Erratic PL thk = 8	St37	15	2	266	0/7
P-Type83	PL 265x130x1	St37	1	26/5	771	2/6
P-Type86	PL 160x120x1	St37	1	16	441	1/5
P-Type87	PL 175x130x1	St37	1	17/5	517	1/7
Total					432862	1066

MATERIAL LIST FOR ASSEMBLY WP1-1 4 No. Required

Mark	Profile	Material	No.	Length	Area	Weight
P-Type19	I-W20x0/6-F15x0/8	St37	1	1202/3	122549	339/3
P-Type57	PL 416x350x1/5	St37	1	41/6	3251	16/5
P-Type60	PL 416x416x1/5	St37	1	41/6	3711	20/4
P-Type59	PL 110x230x1/5	St37	1	11	610	2/8
Total					130121	379

**PROJECT TITLE**  
Truss Saloon 28x24  
ADDRESS GOLPAYEGAN

**EMPLOYER**

**DESIGNED BY** Eng Soolepardaz

**CHECKED BY**

**DRAWN BY**

**DATE** 1402-5-24

**Saloon Height = 11**

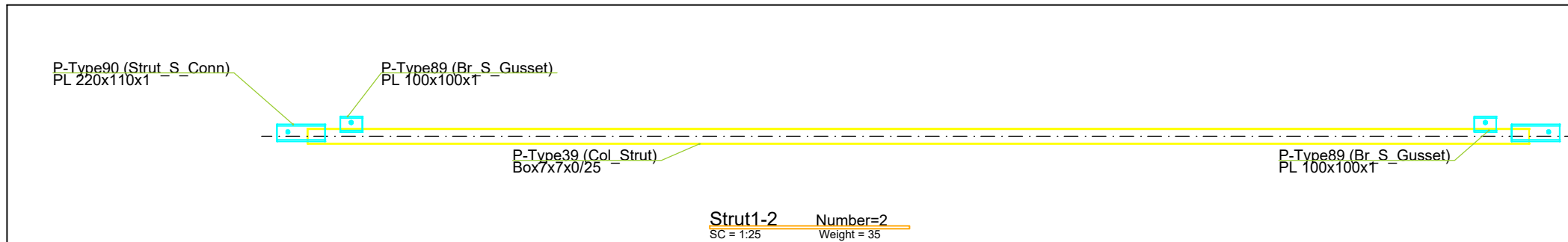
**NORTH**


SHEET NO. S-02 UNITS CENTIMETERS SCALE VAR FIELD STRUCTURAL

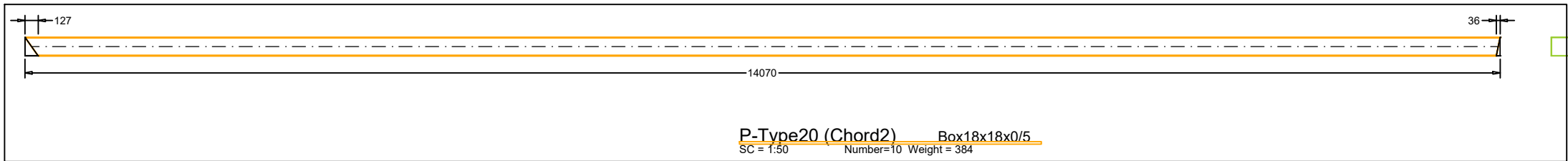
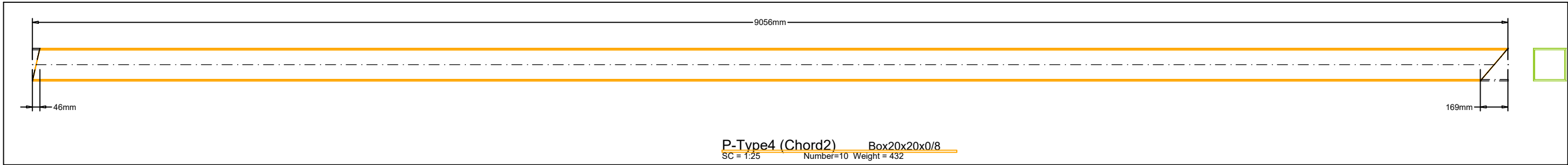
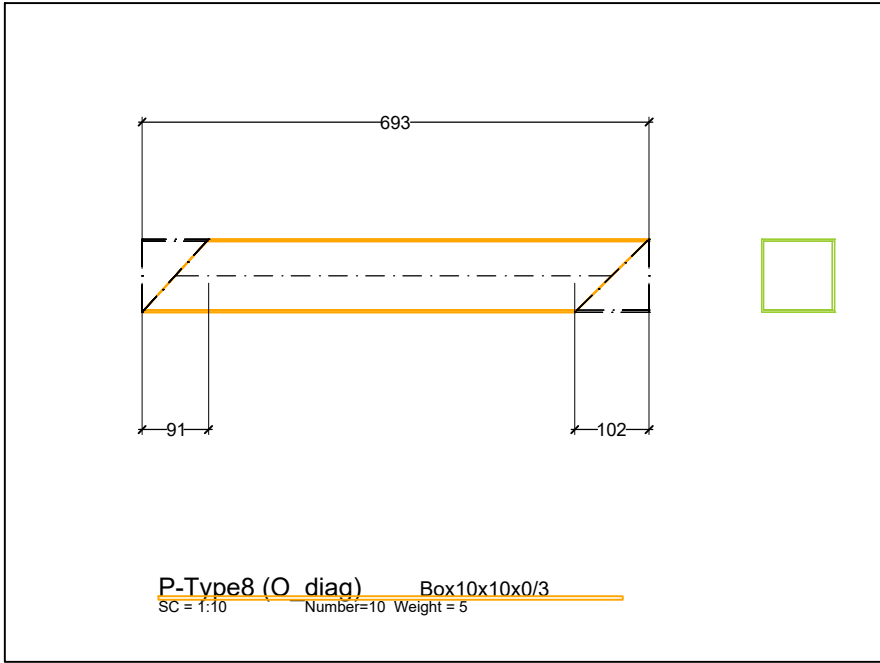
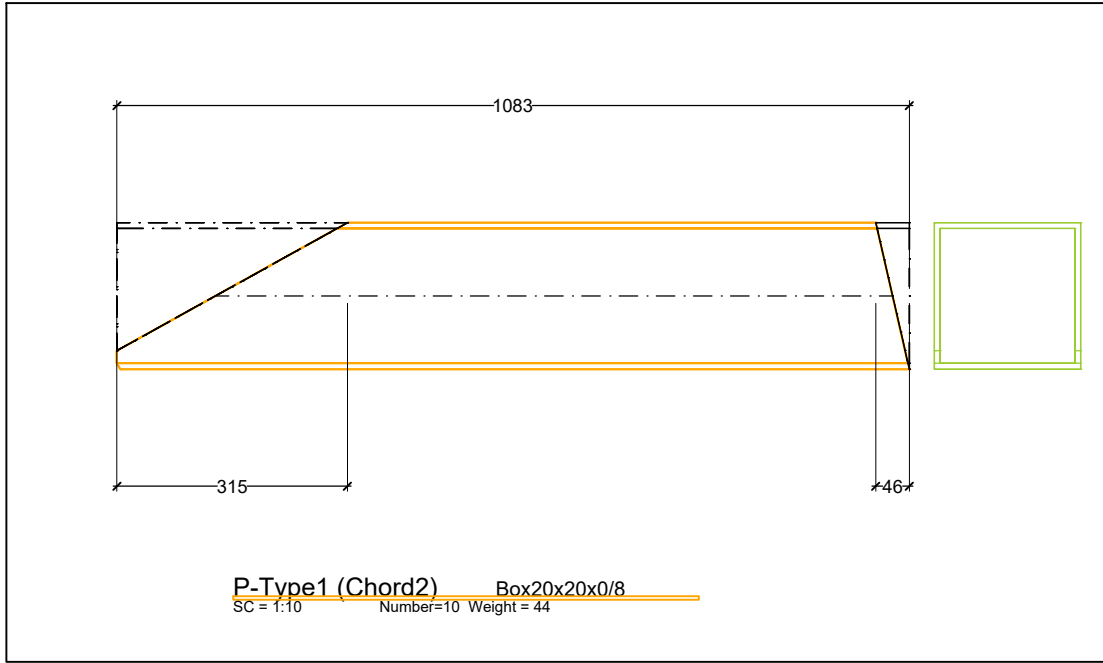
MATERIAL LIST FOR ASSEMBLY StBim1-3 1 No. Required						
Mark	Profile	Material	No.	Length	Area	Weight
P-Type20	Box18x18x0/5	St37	1	1402/2	195920	384/3
P-Type22	Box10x10x0/3	St37	1	148/4	9842	11/6
P-Type23	Box10x10x0/3	St37	1	180/1	11856	13/9
P-Type24	Box10x10x0/3	St37	1	175/7	11470	13/5
P-Type25	Box10x10x0/3	St37	1	165/3	10677	12/5
P-Type26	Box10x10x0/3	St37	1	161/2	10311	12/1
P-Type27	Box10x10x0/3	St37	1	151/6	9580	11/2
P-Type28	Box10x10x0/3	St37	1	147/8	9232	10/8
P-Type29	Box10x10x0/3	St37	1	139	8559	10
P-Type30	Box10x10x0/3	St37	1	135/4	8227	9/6
P-Type31	Box10x10x0/3	St37	1	127/3	7606	8/9
P-Type32	Box10x10x0/3	St37	1	131	7566	8/9
P-Type21	Box16x16x0/5	St37	1	1307/4	161768	317/3
P-Type33	Double Unp12x5/5x0/9]] Dist3	St37	1	68/4	2861	8/3
P-Type55	PL 150x150x0/8	St37	11	15	497	1/3
P-Type54	Erratic PL thk = 8	St37	15	2	266	0/7
P-Type67	PL 570x340x1/5	St37	1	57	4210	22/1
P-Type63	Erratic PL thk = 8	St37	2	2	134	0/3
P-Type68	Erratic PL thk = 8	St37	1	2	86	0/2
P-Type81	PL 484x340x1/5	St37	1	48/4	3607	18/7
P-Type74	Erratic PL thk = 8	St37	2	2	134	0/3
P-Type77	Erratic PL thk = 8	St37	1	2	118	0/3
P-Type91	PL 200x100x0/8	St37	2	20	447	1/2
P-Type53	PL 150x150x0/8	St37	4	15	497	1/4
P-Type61	PL 541x340x1/5	St37	1	54/1	3979	21
P-Type62	Erratic PL thk = 8	St37	1	2	90	0/2
P-Type82	PL 465x340x1/5	St37	1	46/5	3486	17/9
P-Type73	Erratic PL thk = 8	St37	1	2	115	0/3
P-Type97	PL 280x120x1	St37	1	28	755	2/6
P-Type95	PL 155x130x1	St37	1	15/5	461	1/5
P-Type93	PL 185x100x1	St37	2	18/5	433	1/4
Total					498236	961


MATERIAL LIST FOR ASSEMBLY Strut1-2 2 No. Required						
Mark	Profile	Material	No.	Length	Area	Weight
P-Type39	Box7x7x0/25	St37	1	600	29822	29/2
P-Type90	PL 220x110x1	St37	2	22	551	1/9
P-Type89	PL 100x100x1	St37	2	10	241	0/8
Total					31728	35

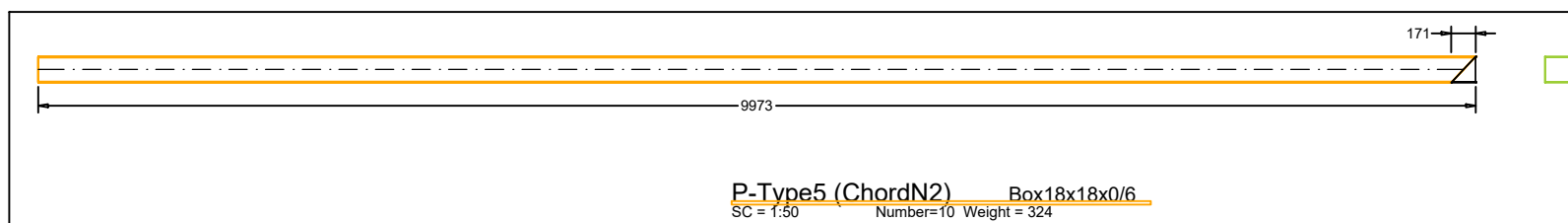
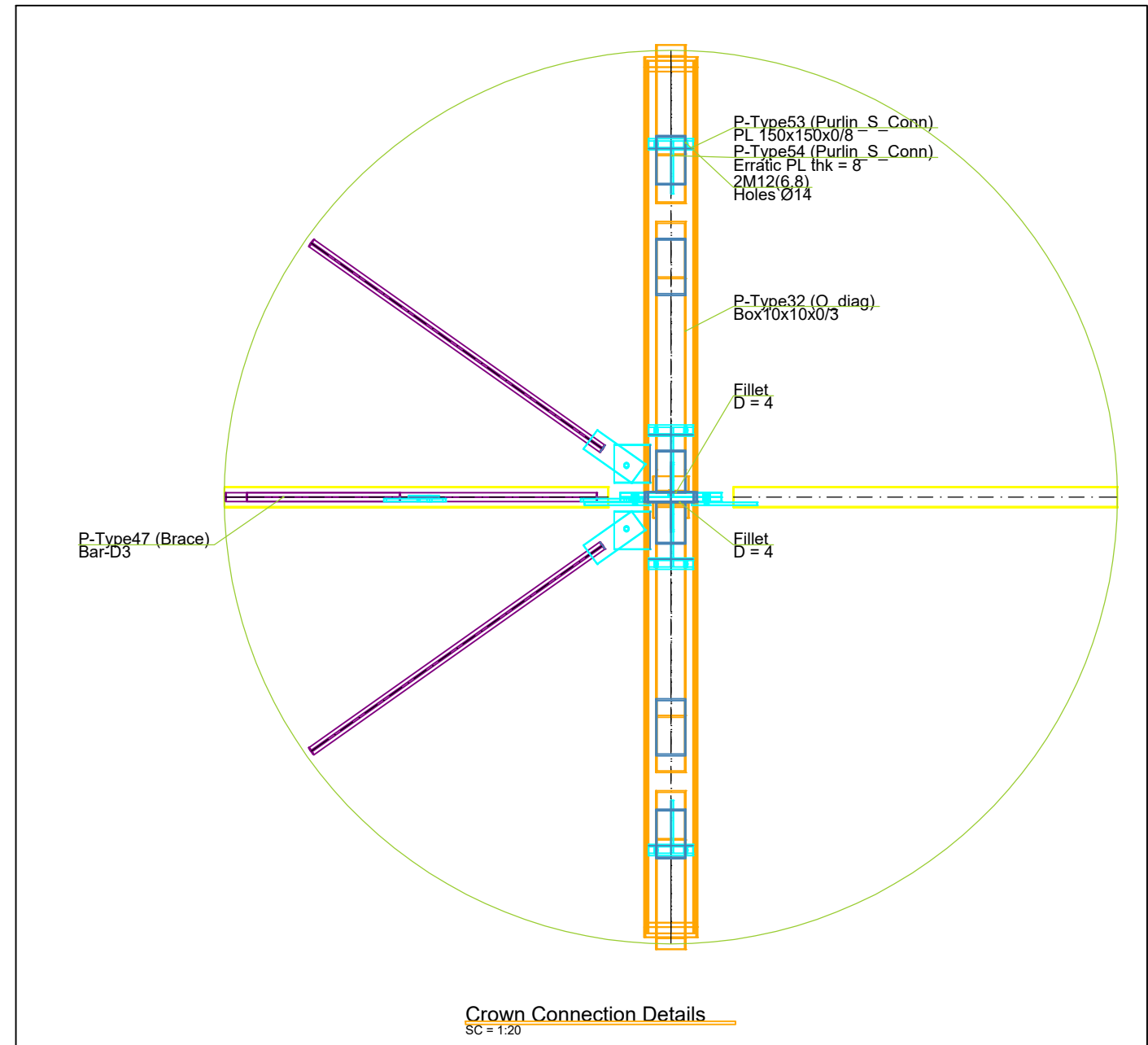
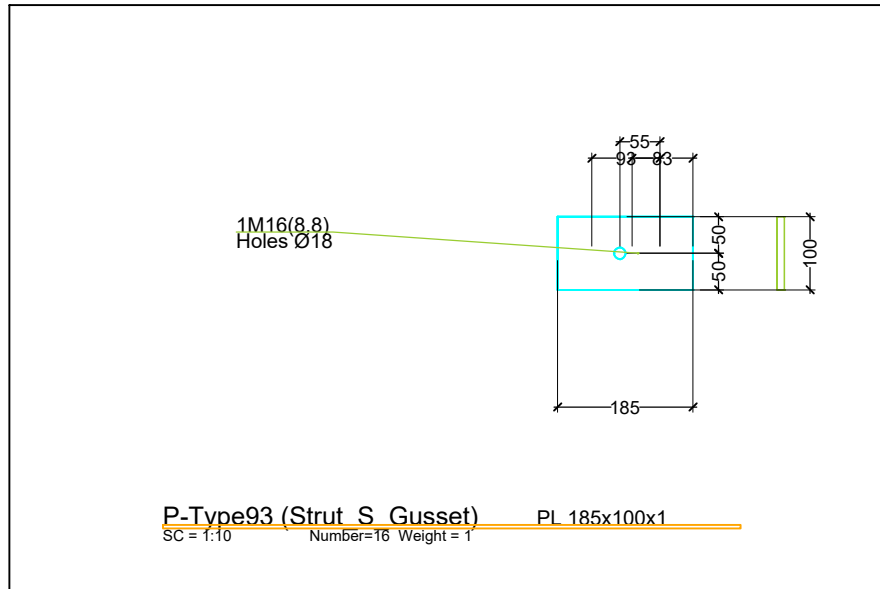
MATERIAL LIST FOR ASSEMBLY Strut1-8 2 No. Required						
Mark	Profile	Material	No.	Length	Area	Weight
P-Type44	Box7x7x0/25	St37	1	600	29822	29/2
P-Type90	PL 220x110x1	St37	2	22	551	1/9
P-Type89	PL 100x100x1	St37	2	10	241	0/8
Total					31727	35




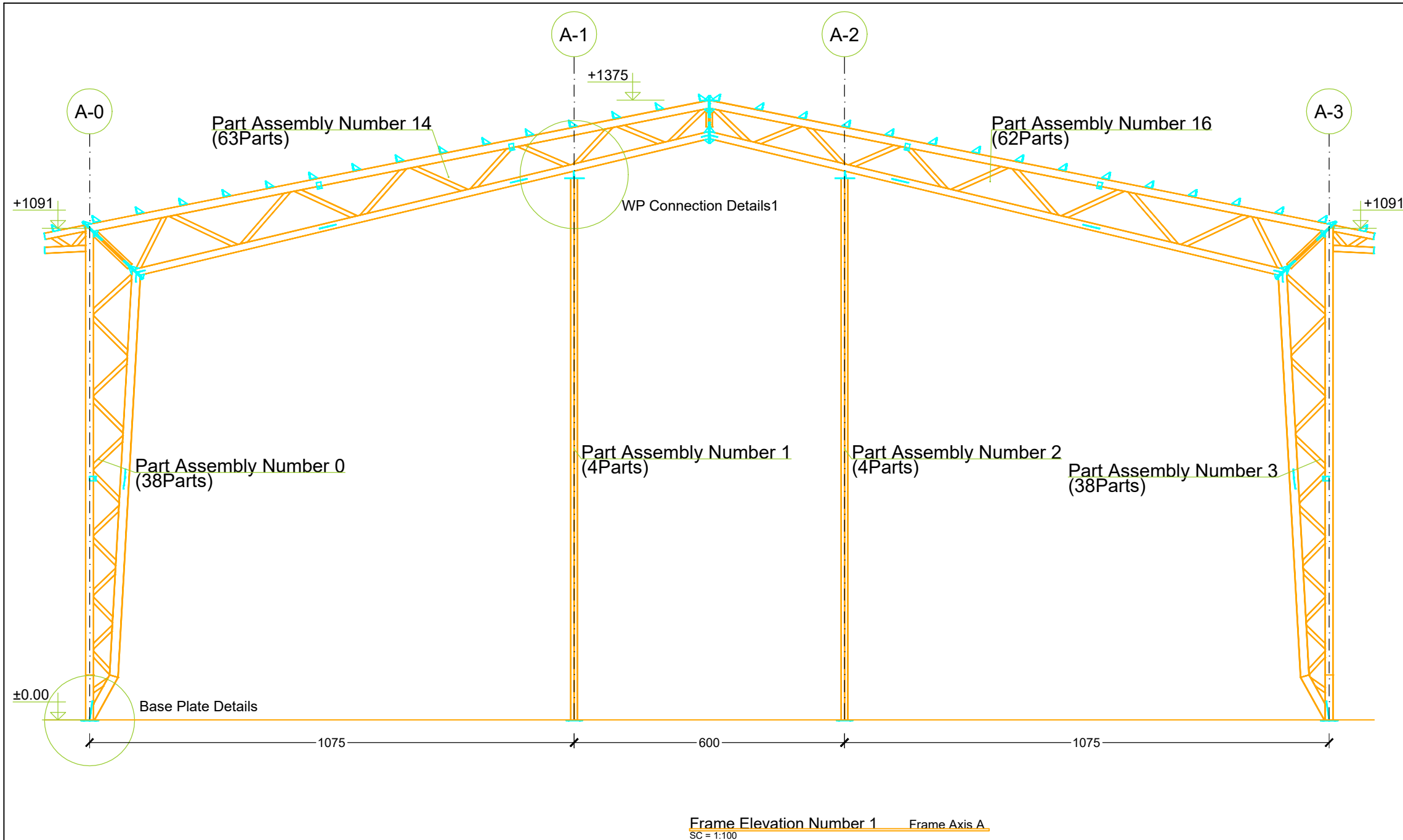
 <b>NORTH</b>	PROJECT TITLE	Truss Saloon 28x24
	ADDRESS	GOLPAYEGAN
	EMPLOYER	
	DESIGNED BY	Eng Soolepardaz
	CHECKED BY	
	DRAWN BY	
	DATE	1402-5-24
	Saloon Height =	11
SHEET NO.	S-03	UNITS CENTIMETERS
SCALE	VAR	FIELD STRUCTURAL




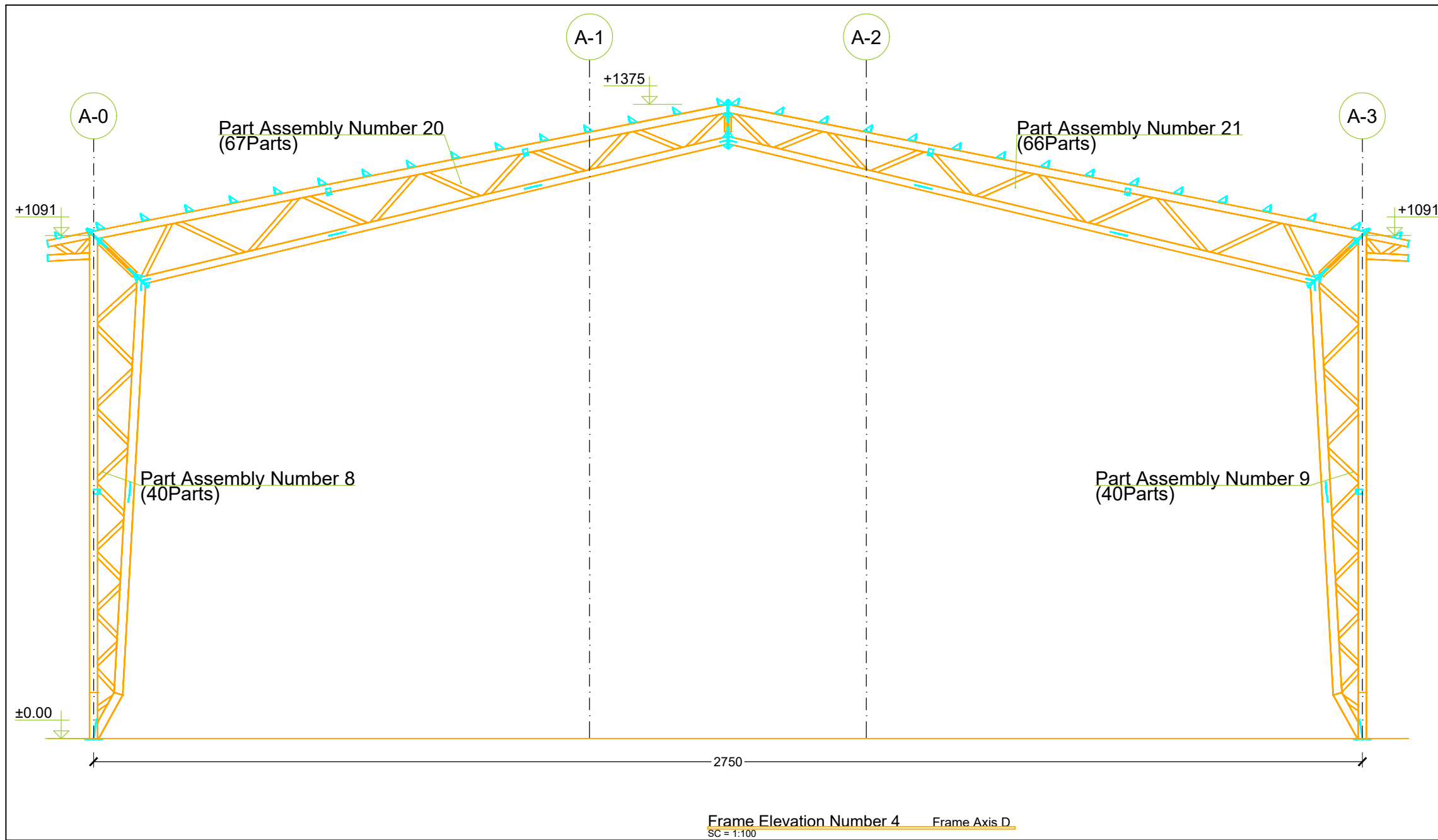
 <b>NORTH</b>	PROJECT TITLE		
	Truss Saloon 28x24		
	ADDRESS GOLPAYEGAN		
	EMPLOYER		
	DESIGNED BY Eng Soolepardaz		
	CHECKED BY		
DRAWN BY			
DATE		1402-5-24	
Saloon Height = 11			
SHEET NO.	S-04	UNITS	CENTIMETERS
SCALE		VAR	FIELD STRUCTURAL




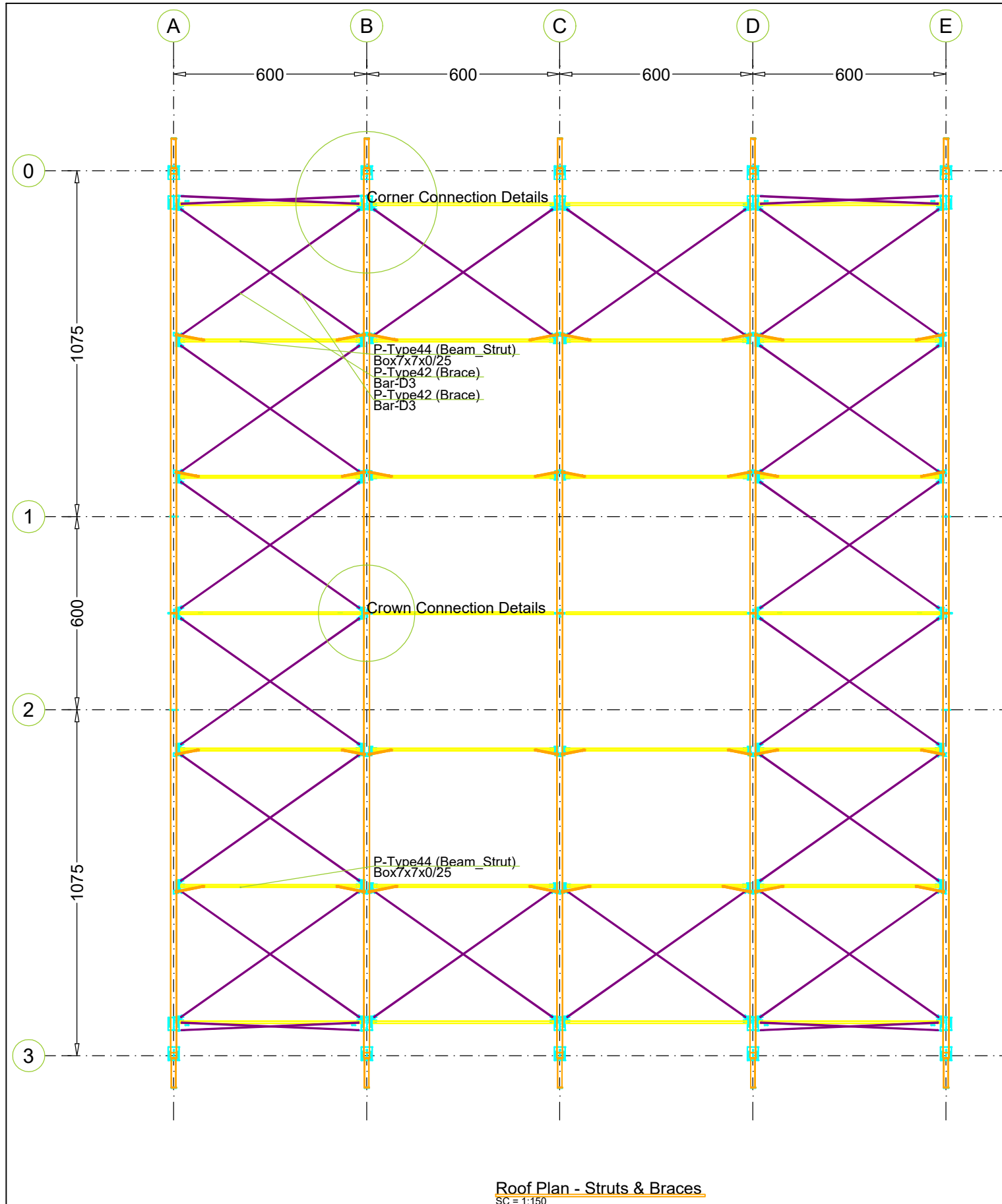
 <b>NORTH</b>	PROJECT TITLE		
	Truss Saloon 28x24 ADDRESS GOLPAYEGAN		
EMPLOYER			
DESIGNED BY Eng Soolepardaz			
CHECKED BY			
DRAWN BY			
DATE		1402-5-24	
Saloon Height = 11			
SHEET NO.	S-05	UNITS	CENTIMETERS
SCALE	VAR	FIELD	STRUCTURAL




 <b>NORTH</b>	PROJECT TITLE		
	Truss Saloon 28x24		
	ADDRESS GOLPAYEGAN		
	EMPLOYER		
	DESIGNED BY Eng Soolepardaz		
	CHECKED BY		
	DRAWN BY		
DATE		1402-5-24	
Saloon Height = 11			
SHEET NO. S-06	UNITS CENTIMETERS	SCALE	VAR FIELD STRUCTURAL



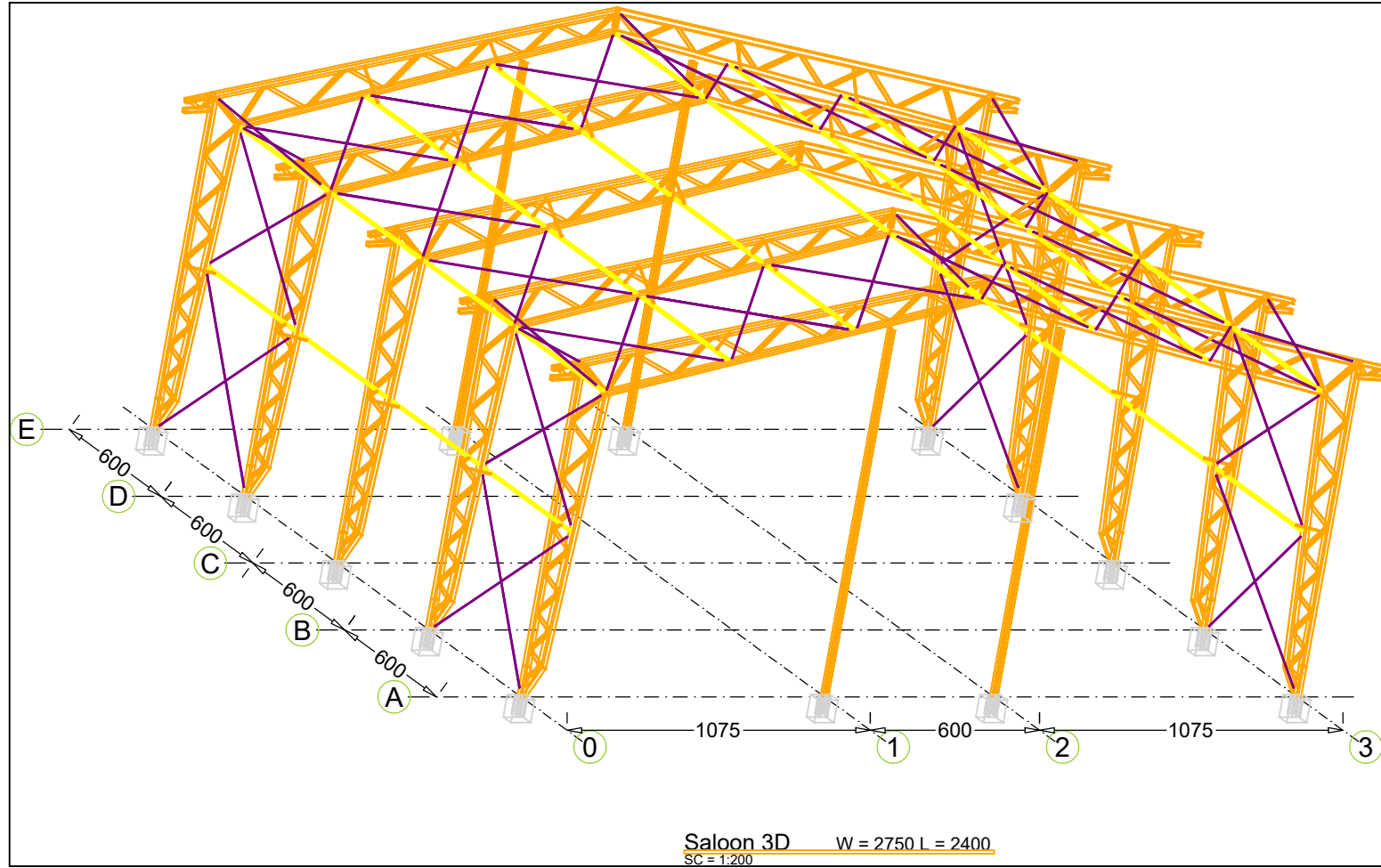
 <b>NORTH</b>	PROJECT TITLE		
	Truss Saloon 28x24		
	ADDRESS GOLPAYEGAN		
	EMPLOYER		
	DESIGNED BY Eng Soolepardaz		
	CHECKED BY		
DRAWN BY			
DATE 1402-5-24			
Saloon Height = 11			
SHEET NO. S-07	UNITS CENTIMETERS	SCALE	VAR FIELD STRUCTURAL




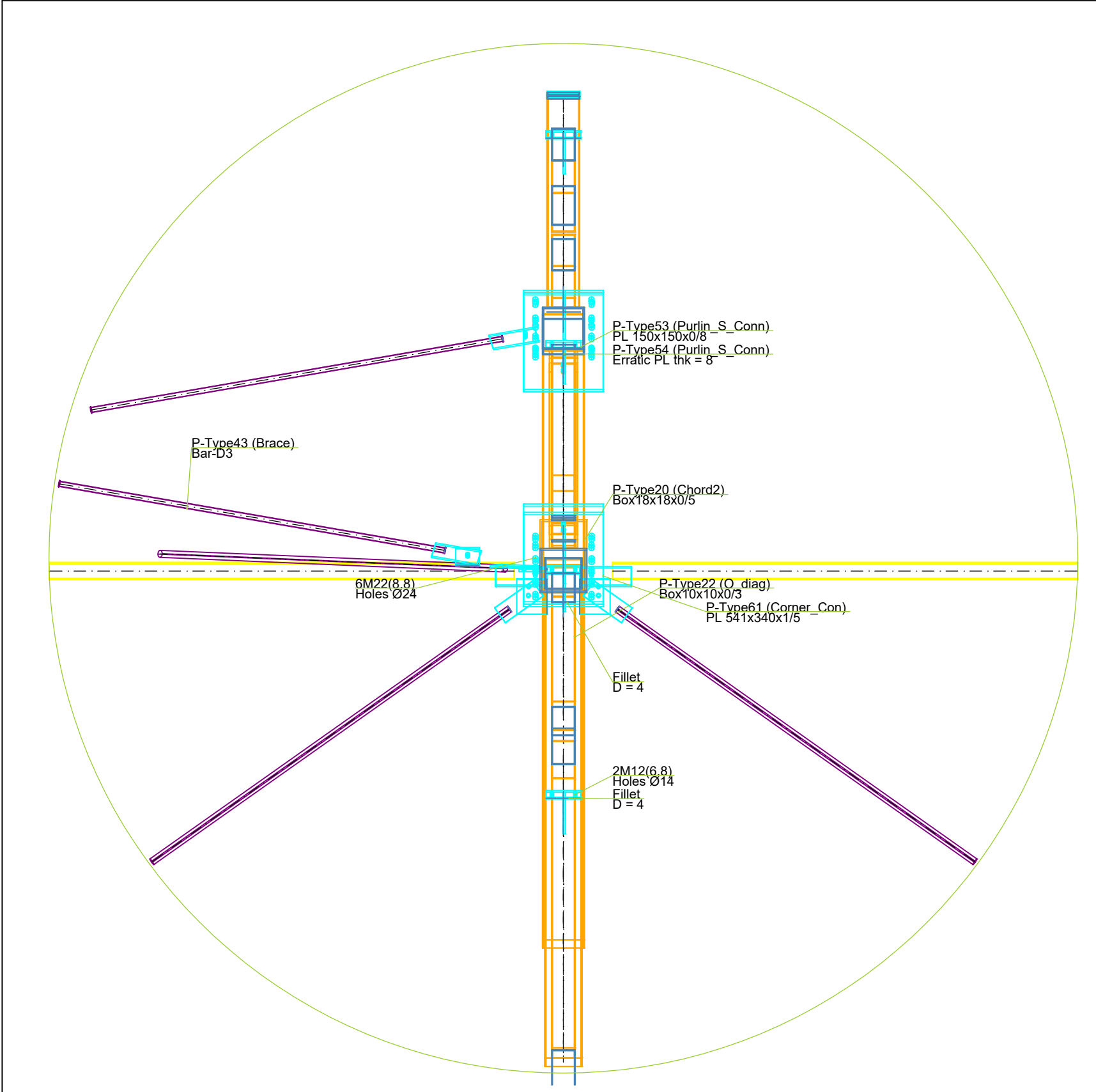
Roof Plan - Struts & Braces  
SC = 1:150

 <b>NORTH</b>	PROJECT TITLE			
	Truss Saloon 28x24			
	ADDRESS GOLPAYEGAN			
	EMPLOYER			
	DESIGNED BY Eng Soolepardaz			
	CHECKED BY			
	DRAWN BY			
	DATE		1402-5-24	
	Saloon Height = 11			
	SHEET NO.	S-08	UNITS	CENTIMETERS
SCALE	VAR	FIELD	STRUCTURAL	




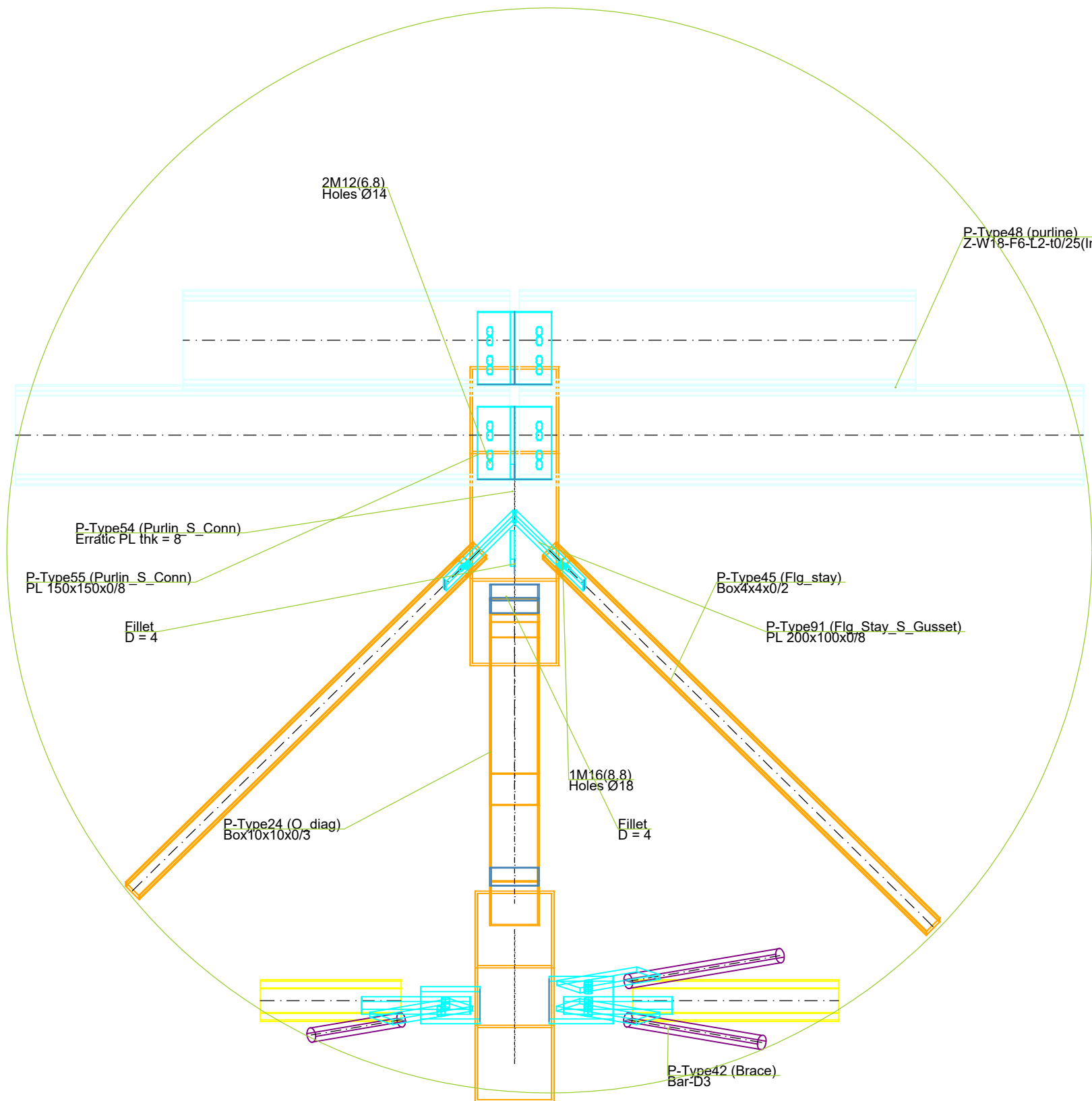


 <b>NORTH</b>	PROJECT TITLE		
	Truss Saloon 28x24		
	ADDRESS GOLPAYEGAN		
	EMPLOYER		
	DESIGNED BY Eng Soolepardaz		
	CHECKED BY		
	DRAWN BY		
DATE		1402-5-24	
Saloon Height = 11			
SHEET NO. S-09	UNITS CENTIMETERS	SCALE	VAR FIELD STRUCTURAL




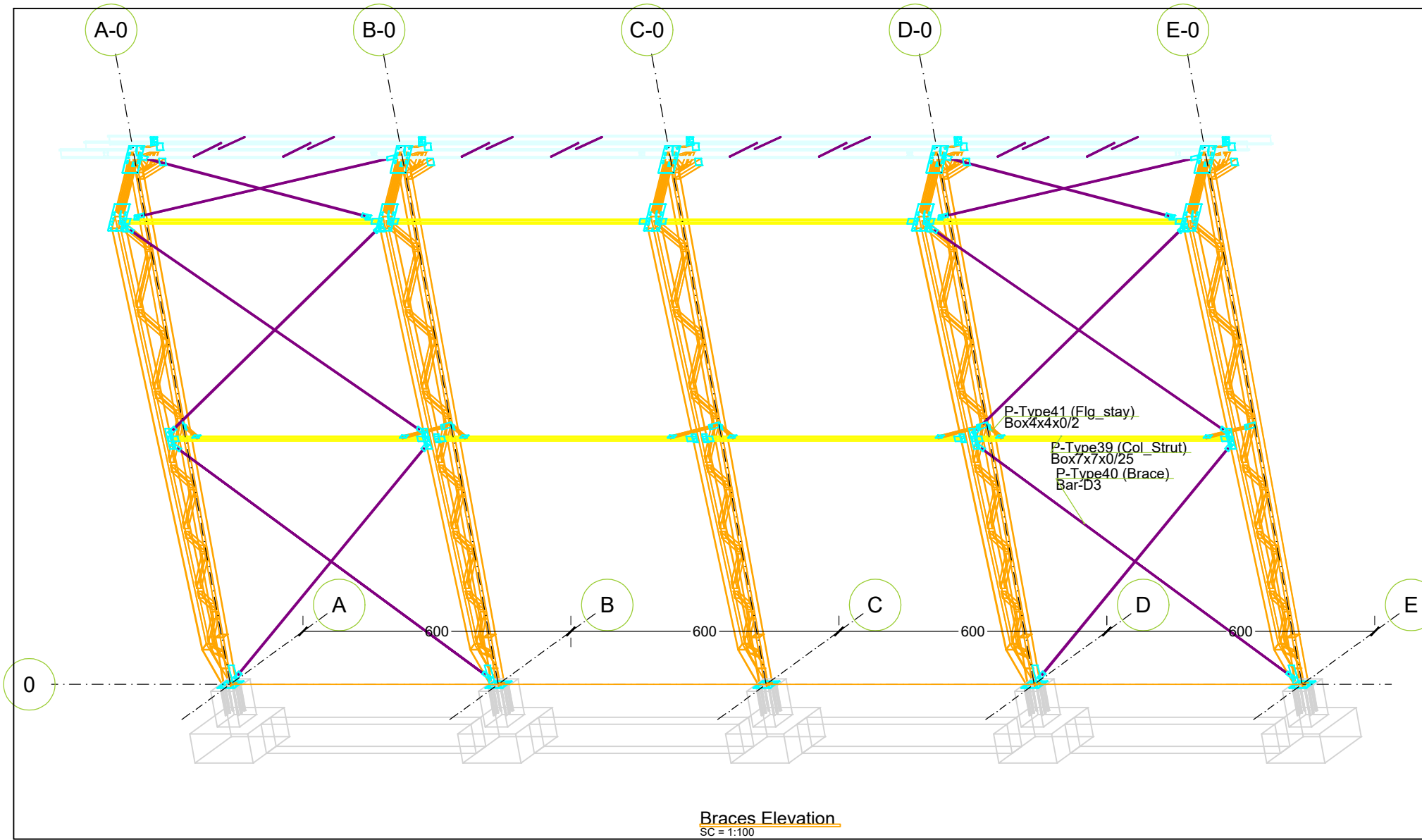
Corner Connection Details  
SC = 1:20


 <b>NORTH</b>	PROJECT TITLE	Truss Saloon 28x24
	ADDRESS	GOLPAYEGAN
	EMPLOYER	
	DESIGNED BY	Eng Soolepardaz
	CHECKED BY	
	DRAWN BY	
	DATE	1402-5-24
	Saloon Height =	11
SHEET NO.	S-10	UNITS CENTIMETERS
SCALE	VAR	FIELD STRUCTURAL

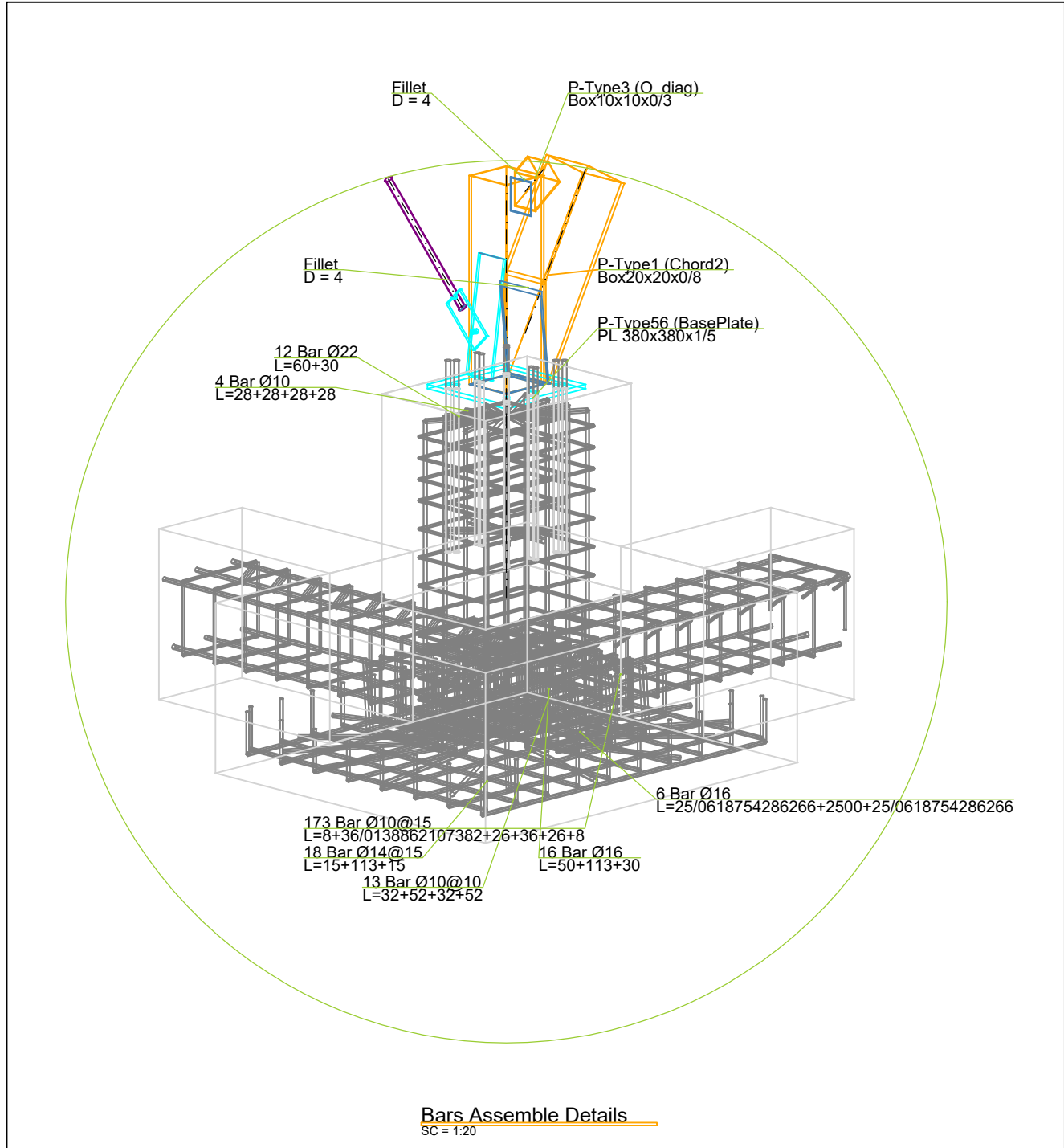



Flange Stay Detail  
SC = 1:10

 <b>NORTH</b>	PROJECT TITLE		
	Truss Saloon 28x24		
	ADDRESS GOLPAYEGAN		
	EMPLOYER		
	DESIGNED BY Eng Soolepardaz		
	CHECKED BY		
DRAWN BY			
DATE		1402-5-24	
Saloon Height = 11			
SHEET NO. S-11	UNITS CENTIMETERS	SCALE VAR	FIELD STRUCTURAL



 <b>NORTH</b>	PROJECT TITLE Truss Saloon 28x24 ADDRESS GOLPAYEGAN			
	EMPLOYER			
DESIGNED BY Eng Soolepardaz				
CHECKED BY				
DRAWN BY				
DATE 1402-5-24				
Saloon Height = 11				
SHEET NO. S-12	UNITS CENTIMETERS	SCALE	VAR	FIELD STRUCTURAL



 <b>NORTH</b>	PROJECT TITLE			
	Truss Saloon 28x24			
	ADDRESS GOLPAYEGAN			
	EMPLOYER			
	DESIGNED BY Eng Soolepardaz			
	CHECKED BY			
DRAWN BY				
DATE		1402-5-24		
Saloon Height = 11				
SHEET NO. S-13	UNITS CENTIMETERS	SCALE	VAR	FIELD STRUCTURAL